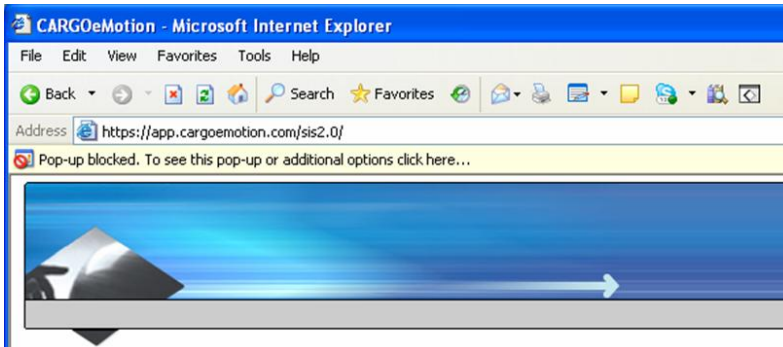


## Instruction of pop-up windows handling

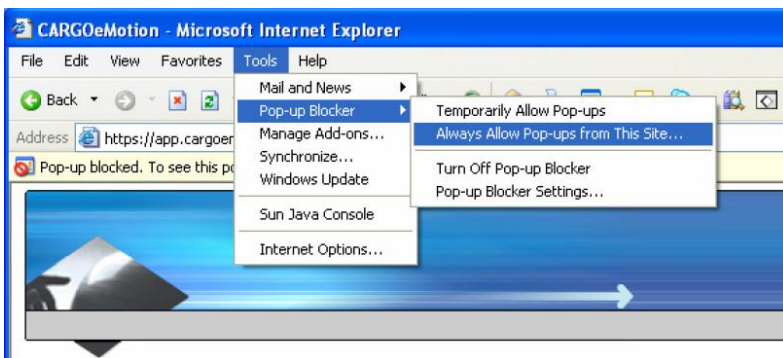
As new approach of our new system (SIS 2.0), the login page will be displayed on another new window called pop-up window. However, it may be blocked by other applications, such as web browser toolbar (i.e. Yahoo! Toolbar). For accessing SIS 2.0, the additional configuration is required. The following instruction shows how to configure. If you had more than one toolbars, you have to configure all installed toolbar(s). Otherwise, SIS 2.0 still cannot work properly.

## Microsoft Internet Explorer (IE) built-in pop-up blocker

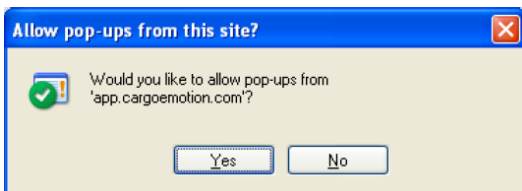
1. An alert will be displayed the IE pop-up blocker has been turned on



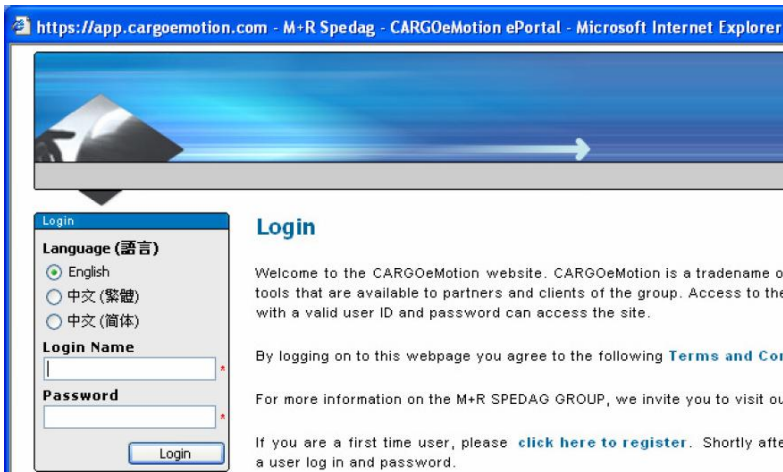
2. Select the menu: Tools > Pop-up Blocker > Always Allow Pop-ups from This Site...



3. The following dialog will be displayed. Click "Yes"

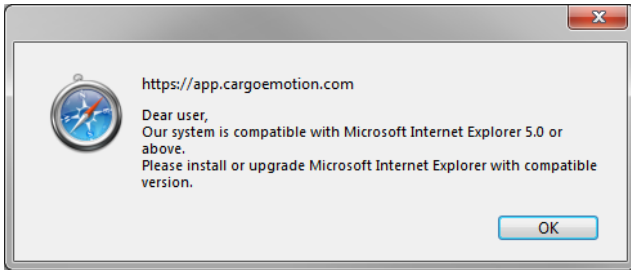


4. Complete and a new window will be displayed

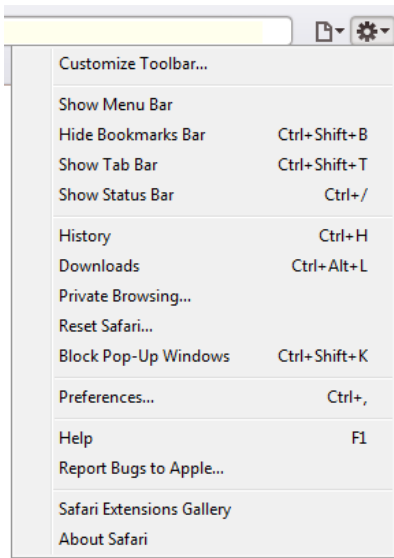


## Safari built-in pop-up blocker

1. An alert will be displayed if the Safari pop-up blocker turned on



2. Click the setting button and deselect "Block Pop-Up Windows"

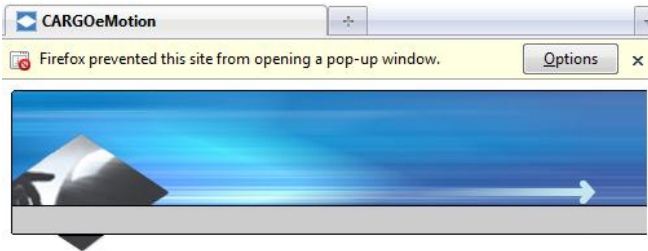


3. Complete and a new window will be displayed

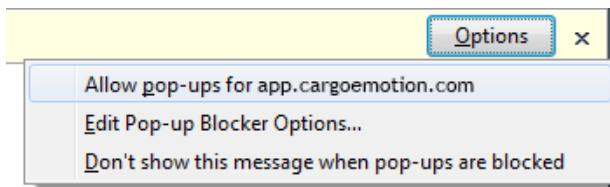


## Firefox built-in pop-up blocker

1. An alert will be displayed if the Safari pop-up blocker turned on



2. Click the option button and select "Allow pop-up for"

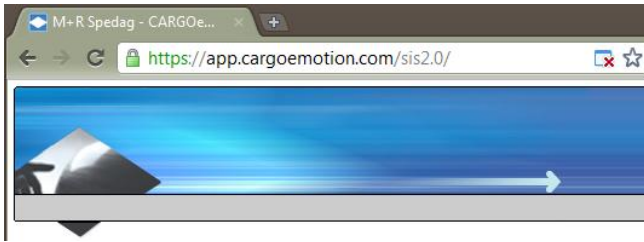


3. Complete and a new window will be displayed

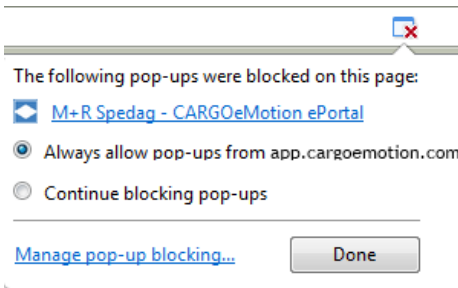


## Chrome built-in pop-up blocker

1. An alert will be displayed if the Safari pop-up blocker turned on



2. Click the popup-blocker button, select "Always allow pop-ups from app.cargoemtion.com" and click "Done"



3. Complete and a new window will be displayed

